



Law Schools Global League Summer School 2013

Católica Global School of Law, Lisbon

July 15 to 26, 2013

DESCRIPTION

The **Law Schools Global League (LSGL)** is a worldwide innovative project aiming to meet the new challenges of the economic, political and financial globalization. Three of the main objectives of the **LSGL** are the cooperation in the reform of academic content and methods in the field of law; the increase of faculty, researchers and students' exchange and the creation of joint and double degrees. The League will also reflect on the role of the lawyer in today's world and the relationships between law schools and the global market.

LSGL launches this year its **1st LSGL Summer School** at **Católica Global School of Law** (www.fd.lisboa.ucp.pt/english), in Lisbon, from **15 to 26th July 2013**.

The aim of this **Summer School** is to give students a cutting-edge learning experience in exploring the challenges of the legal profession in an increasingly globalized world. Building on the genuine global features of LSGL and collaboration of LSGL members' faculty coming from all major legal systems in designing and instructing the courses, the **1st LSGL Summer School** will offer participants a unique professional and social opportunity that is unmatched by the current market for summer schools.

The **1st LSGL Summer School** will offer a 2 weeks / 48 hours programme designed to foster intensive student's participation, maximizing the opportunity of having students and faculty from various legal traditions to promote exchange and debate from a truly global perspective. It will allow students to gain an understanding of the globalization of the law in some of the major fields of law.

LANGUAGE

English

Law Schools Global League Summer School 2013 @





ACADEMIC PROGRAMME

COURSES

Business Forms in a Transnational Context (12 hours / July, 15-19)

Francisco Satiro (Direito GV)
Erik Vermeulen (Tilburg Law School)

Human Rights in Global Context (12 hours/ July 15-19)

Yap Po Jen (University of Hong Kong)
Pavel Molek (Católica Global School of Law / Masaryk University Brno)

Global Regulation of Internet (12 hours/ July, July 22-26)

Pierre Larouche (Tilburg Law School)
James Speta (Northwestern University)

Law in a Transnational Environment (12 hours/ July 22-26)

Peer Zumbansen (Tilburg Law School / Osgoode Hall Law School)
Jan Dalhuisen (Católica Global School of Law)

Syllabi will soon be available.

FACULTY

Erik Vermeulen (Tilburg Law School)

Erik P.M. Vermeulen is Professor of Business and Financial Law at Tilburg University and Tilburg Law and Economics Center (TILEC) in the Netherlands. He is also Senior Counsel Corporate/Vice President at the Corporate Legal Department of Philips International B.V. in the Netherlands, where he advises on corporate governance issues, including the global corporate structure of the Philips Group of companies. In addition to the focus on corporate governance, he has extensive experience in mergers and acquisitions, corporate finance projects, and general corporate and securities law



matters. Corporate governance and venture capital are common themes in his lectures in the International Business Law Program (of which he is the director) at Tilburg University. His current research looks at corporate governance, value creation and innovation. It is about the role of corporate governance in promoting the competitiveness and innovative capacity of both listed and non-listed companies. Professor Vermeulen has worked on national and international projects for organizations, such as the European Commission, OECD, the Dutch Development Finance Institution and local governments in the Netherlands, concerning financial and venture capital markets, corporate law, and corporate governance

Francisco Satiro (Direito GV)

Francisco Satiro is Professor of Business Law, Corporate Law, Insolvency and Capital Markets Regulation at Fundação Getulio Vargas (FGV) Law School. Founding member of GV - CePEMeC (Center for Studies and Research on capital and financial markets) which aims to provide a critical analysis of Brazilian capital markets and financial environment. Member of the Board of Appeals of the National Financial System (CRSFN) which decides the final administrative review process for appeals related to decisions rendered by the Brazilian securities market regulator (CVM), Central Bank (BACEN) and Money Laundering Prevention Agency (COAF). Under graduated in Law in 1993. Ph.D. in Business Law in 2001 from the University of São Paulo, having written his thesis on legal issues related to stock exchange options

James Speta (Northwestern University)

Jim Speta has been a member of the faculty at Northwestern Law since 1999. His research interests include telecommunications and Internet policy, antitrust, administrative law, and market organization. He teaches in the Law School and in the Joint Program in Law and Business operated by the Law School and the Kellogg School. A 1991 graduate of the University of Michigan Law School, Speta joined the Northwestern faculty following a one-year visit. He had previously clerked for Judge Harry T. Edwards on the United States Court of Appeals for the D.C. Circuit and practiced appellate, telecommunications, and antitrust law with the Chicago firm of Sidley & Austin.

Jan Dalhuisen (Católica Global School of Law)

Jan Dalhuisen is a leading expert in international commercial and financial law and the occupant of the Miranda Chair at the Católica. He is also Professor at King's College in London and UC Berkeley, and has held important Visiting Professorships in Continental Europe, China and Australia. He is Corresponding Member of the Royal Netherlands Academy of Arts and Sciences and the author of Dalhuisen on Transnational and Comparative Commercial, Financial and Trade Law and earlier of Dalhuisen on International Insolvency and Bankruptcy. Professor Dalhuisen is a graduate of the University of Amsterdam, where he also obtained a PhD, and of UC Berkeley. He is Member of the NY Bar, Fellow of the Chartered Institute of Arbitrators in London, an active international arbitrator and former senior in house counsel and investment banker.



Pavel Molek (Católica Global School of Law / Masaryk University Brno)

Pavel Molek is a lecturer at the Law Faculty of Masaryk University, Brno, since 2007, and a permanent visiting professor at Católica Global School of Law, Lisbon. He holds a PhD from Masaryk University and an LL.M. from Católica. He specialises in Human Rights, his favourite topics being freedom of expression, right to fair elections and refugee rights. He has been for ten years legal clerk at the Supreme Administrative Court of the Czech Republic. His main publications are: "Legal Concept of 'Persecution' in the Context of European Asylum Acquis", C. H. Beck, Praha 2010; "Freedom of Expression", Auditorium, Praha 2007 (together with Petr Jäger); "Right to Fair Trial", Wolters Kluwer, Praha 2012; and "Communist Law in the Czechoslovakia - Chapters on the Era of Injustice", Masaryk University, Brno 2009 (as a co-editor and co-author).

Peer Zumbansen (Tilburg Law School / Osgoode Hall Law School)

Peer Zumbansen is professor of law and holds the Canada Research Chair in Transnational Economic Governance and Legal Theory at Osgoode Hall Law School, in Toronto, Canada. In 2013, he holds the Inaugural Chair in Global Law at Tilburg Law School before joining Michigan Law School as Senior Research Scholar for the academic year 2013-2014. He is a founding member and co-editor in chief of the German Law Journal, the founder of the CLPE Comparative Research in Law & Political Economy SSRN Research Paper Series and, since 2012, the editor in chief of *Transnational Legal Theory*. Zumbansen holds a licence en droit from Paris, the state law exam, a PhD and Habilitation in Law from Frankfurt and an LL.M. from Harvard Law School. Before joining Osgoode in 2004, he was senior research fellow at Johann Wolfgang Goethe-University, Frankfurt and a Jean Monnet Fellow at the European University Institute. He has held visiting professorships in the U.S., Canada, Switzerland, Colombia, Australia, Ireland and Germany. At Osgoode, he founded the CLPE Network in 2004 and the Critical Research Laboratory in Law and Society in 2006. He co-directed the European Union Centre of Excellence at York University from 2010-2012 after serving as Associate Dean Research of Graduate Studies and Institutional Relations at Osgoode Hall from 2007 to 2009. His last monograph is "Rough Consensus and Running Code: A Theory of Transnational Private Law" (co-authored with Galf-Peter Calliess), published by Hart in 2010, pb. 2012. Recent edited volumes include "Law, Economics and Evolutionary Theory" (Elgar, 2011, co-edited with G-P Calliess); "The Embedded Firm" (Cambridge, 2011, co-edited with C Williams), "Comparative Law as Transnational Law" (Oxford 2012, co-edited with R Miller), and "Beyond Territoriality: Transnational Legal Authority in an Age of Globalization" (Brill 2012, co-edited with G Handl and J Zekoll).

Pierre Larouche (Tilburg Law School)

Pierre Larouche (1968) is Professor of Competition Law at Tilburg University and Founding Director of the Tilburg Law and Economics Center (TILEC), as well as Professor at the College of Europe (Bruges). A graduate of McGill, Bonn and Maastricht, he clerked at the Supreme Court of Canada in 1991-1992 and practised law for three years before joining academia. His teaching and research interests include competition law and economic regulation, electronic communications law, media law, comparative law and tort law. He has been a guest professor at McGill University (2002),



National University of Singapore (2004, 2006, 2008, 2011, 2013), Northwestern University (2009-2010) and Sciences Po (2012).

Yap Po Jen (University of Hong Kong)

Po Jen Yap is an Associate Professor of Law at the University of Hong Kong where he specializes in constitutional law and theory. He obtained his LL.B degree from the National University of Singapore, and he also holds LL.M degrees from both Harvard Law School and the University College London. He also has a Masters of International Relations from the University of Cambridge. His recent publications on constitutional law include 'Defending Dialogue', (2012) Public Law 527; 'Constitutionalizing Capital Crimes: Judicial Virtue or Originalism Sin?', (2011) Singapore Journal of Legal Studies 281 and '10 Years of the Basic Law: The Rise, Retreat and Resurgence of Judicial Power in Hong Kong', (2007) 36 Common Law World Review 166. He is also a co-editor of Public Interest Litigation in Asia, a book published by Routledge in 2011.

SCHEDULE

Week	Date	Course 1	Schedule	Course 2	Schedule
1	15, 16, 17 July	Business Forms in a Transnational Context	Monday, Tuesday, Wednesday 9:00 h to 10:30 h; 11:00 h to 12:30 h	Human Rights in a Global Context	Monday, Tuesday, Wednesday 14:00 h to 16:00 h
	18, 19 July		Thursday, Friday 9:00 h to 10:30 h		Thursday, Friday 11:00 to 12:30 h; 14:00 h to 16:00 h
2	22, 23, 24, 25, 26 July	Law in a Transnational Environment	Monday to Friday 9:00 h to 10:30 h; 10:50 h to 12:00 h	Global Regulation of Internet	Monday to Friday 14:00 h to 15:30 h; 15:50 h to 17:00 h



ADMISSION REQUIREMENTS AND APPLICATION

Each Member School can select two students for the programme, being expected that at least one student from each school will attend the **1st. LSGL Summer School**. Request for sending more than 2 students will be reviewed by Católica Global School of Law on a case by case basis.

ADMISSION REQUIREMENTS

- Students who have completed at least 2 years of legal studies at university level; or
- J.D. and L.L.M. students;
- Certificate of English proficiency (for non English native speakers).

APPLICATIONS

Partner Schools should send the appointed students' application forms (with documents: cv, copy of ID/ passport; digital photo and tax number) no later than **May 31** to Católica Global School of Law at fbc@fd.lisboa.ucp.pt.

Additional applications should also be sent to Católica by **May 31** to fbc@fd.lisboa.ucp.pt.

Students will receive an admission email from Católica Global School of Law no later than June 14.

TUITION, PAYMENT AND REGISTRATION

TUITION

Tuition is € 1.000. It covers the academic programme and the social programme (opening session & cocktail / coffee-breaks / happy-hour and closing session).

Law Schools Global League Summer School 2013 @



Tuition does not include:

- Travel and accommodation expenses;
- Meals (except those included in the programme).

REGISTRATION AND PAYMENT

Students should pay tuition (€ 1.000) within **15 days** after the admission email. Payment shall be done by bank transfer to:

Bank: Millenniumbcp

NIB: 0033.0000.21080018422.43

IBAN: PT50.0033.0000.21080018422.43

SWIFT/BIC: BCOMPTPL

The transfer must clearly indicate "**1st LSGL Summer School**" and "**YOUR FULL NAME**". The bank transfer receipt should be sent immediately to fbc@fd.lisboa.ucp.pt. Students are responsible for bank transfer expenses.

After payment confirmation, students will be enrolled and will be given a student number as well as a login and password that will enable them to access to the Summer School Blackboard website to download teaching materials and other information.

LIABILITY AND INSURANCE

The organization cannot accept liability for personal accidents or loss of or damage to private property of participants and accompanying persons. Participants are advised to take out their own personal travel and health insurance for their trip.

VENUE

Católica Global School of Law – Lisbon (Universidade Católica Portuguesa)

Address: Palma de Cima / 1649-023 LISBOA Portugal

Phone: +351- 21 721 41 79

Email: fbc@fd.lisboa.ucp.pt

Law Schools Global League Summer School 2013 @



Site: www.fd.lisboa.ucp.pt/english

Contact person: Flávia Beja da Costa

GETTING TO CATÓLICA GLOBAL SCHOOL OF LAW (UCP CAMPUS)

By taxi

Taxis in Lisbon are beige or black and green. Usually have the word TAXI on top. Taxi fares are calculated on the basis of an initial flat charge of around €2,50 and the distance is metered from then on. In addition, if the taxi has been called out, rather than hailed in the street there is a small surcharge. If luggage is carried, a surcharge is charged. Meters are displayed in all licensed taxis, along with the driver's identity card.

By bus

The Campus is served by three buses n°s 764, 755 and 768



For more information: <http://www.carris.pt/en/home/>

By metro / tube

The nearest metro stations are at a 10 minutes walking distance from campus:

Cidade Universitária (yellow line) or Laranjeiras / Jardim Zoológico (blue line)



For more information: <http://www.metrolisboa.pt/eng/>

By car

If you come by car you may park inside the Campus.

OTHER VENUE INFORMATION

Facilities

- Library
- Stationary
- Bookstore
- Cafeterias and Restaurant
- PC rooms with specific schedule
- Bank Services



Smoking Policy

Smoking is strictly prohibited inside the University buildings.

Internet Access

The campus has free wireless access. You should configure your laptop at arrival.

LISBON: GENERAL PRACTICAL INFORMATION

Language

Portuguese is Latin in origin and the third most widely spoken European language in the world. It is the mother tongue of about 200 million people. Portuguese is the official language in several countries: Angola, Cape Verde, Guinea-Bissau, Mozambique, São Tomé e Príncipe in Africa, and Brazil in South America.

Population

Population 2.5 million

Weather

The month of July in Lisbon is characterized by gradually rising daily high temperatures, with daily highs increasing from 26°C to 29°C over the course of the month, exceeding 35°C or dropping below 22°C only one day in ten.



For the latest weather click on www.meteo.pt

Currency and Banking

The unit of currency is the Euro (€). Major credit cards are accepted in most hotels, shops and restaurants. Automatic changing and cash dispensing machines linked to international networks are also widely available.

Electricity

Voltage: 220/380 volts at a frequency of 50 Hertz. All sockets follow European standards. To use American-type plugs, a 220-volt transformer should be used together with an adapter plug.

Emergency Phone Number

For Police and Ambulance emergency dial 112.

Health Requirements

With the exception of vaccination certificates for persons coming from areas where yellow fever is endemic, at the present there are no special health requirements.

Sales Tax

Sales tax (VAT) is included in prices quoted. For non E.U. residents, tax free shopping schemes are available in many shops, which give substantial savings to visitors.



Tipping

Tipping is optional, but adding 10% to the amount is regular practice in taxis, restaurants and bars.

GETTING TO LISBON

Lisbon is easy to get to. It is a short flight away from most European cities, and is just as easily accessible by road, railway or sea.

By Air

Lisbon International Airport, 7 km from the city centre, has daily flights to and from the major cities in Europe and the world. Lisbon Airport has two terminals: Terminal 1 is for International Departure and International and Domestic Arrivals and Terminal 2 is for Domestic Departures only.

For further information please visit the official website of Lisbon International Airport: www.ana.pt

By Road

Arriving in Lisbon by road is a pleasant experience, as the visitor can enjoy the beautiful countryside along the way. The city has good road accesses and the most frequently used routes are: the A1 motorway, the 25th April Bridge and Vasco da Gama Bridge.

By Train



Scores of national and international trains arrive in Lisbon every day. In addition to Santa Apolónia terminal station, the city has the Gare do Oriente, adjacent to the Parque das Nações. Both stations have direct bus or underground connections to the city center.

High-speed Alfa trains depart for Oporto every day until 20h55. The Sud-Expresso to Paris departs daily at 18h00, while the Lusitania train to Madrid departs at 22h00 every day.

Rail CP Call Center

From Portugal 808 208 208 (local call prices)

From abroad +351 707 201 280 (international call prices)

For further information please visit the official website: www.cp.pt

Passport and Visa Information

No visa requirements for EU passport holders. All non-EU citizens should contact their local embassies for specific requirements.

Working hours

Buses: Every day 6.30 a.m. – 12 p.m./10 a.m.

Banks: Mon-Fri. 8.30 a.m. – 3 p.m.

Shopping Centres: Every day 10 a.m. - 12 p.m.

Shops: Mon -Fri. 9 a.m. - 1 p.m. and 3 p.m. - 7 p.m. Sat. 9 a.m. - 1p.m.

Embassies: Mon. - Fri. 9 a.m. - 3 p.m.

Post Offices: Mon. - Fri. 8.30 a.m. - 6.30 p.m.

Law Schools Global League Summer School 2013 @



Pharmacies: Mon. - Fri. 9 a.m. - 1 p.m. and 3 p.m. - 7 p.m. also: 24 hour (night) service

Meal times: Lunch: 12 a.m. - 2 p.m.

Dinner: 8 p.m. - 10 p.m.

Underground: Every day 6.30 a.m. - 1 a.m.

ACCOMMODATION IN LISBON

1. A FEW STEPS FROM CAMPUS (1 minute walking):

MARRIOTT HOTEL LISBOA - <http://www.marriott.co.uk/hotels/travel/lispt-lisbon-marriott-hotel/>.



This hotel offers a special price for students of the 1st LSGL Summer School:

Single room (breakfast included): 70€

Double room (breakfast included): 80€

2. OTHER HOTELS AT A WALKING DISTANCE FROM THE CAMPUS (15 / 20 minutes walking):

HOTEL AÇORES LISBOA (4 stars) - Price per person per night: from € 57

<http://www.bensaude.pt/pt/hoteis-lisboa/hotel-aco-res-lisboa/>

Law Schools Global League Summer School 2013 @



NOVOTEL LISBOA (4 stars) - Price per person per night: from € 57

<http://www.novotel.com/pt/hotel-0784-novotel-lisboa/index.shtml>

SANA MALHOA HOTEL (4 stars) - Price per person per night: from € 74.45

<http://www.booking.com/hotel/pt/sanamalhoahotellisbon.html?aid=311098;label=hotel-38673-pt-CcrmzezrGImO1yOGZ9LlsgS2868579737%3Apl%3Aata%3Aap1%3Aap2%3Aac%3Aap1t1%3Aneg;sid=0d450109f674e0dcfe276e5050f6bb2;dcid=1&lang=en-us>

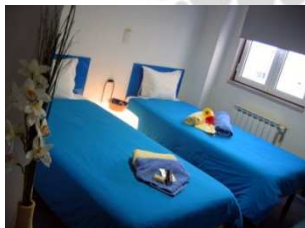
3 – OTHER ACCOMODATION IN THE CITY CENTRE / DOWNTOWN / AFFORDABLE ACCOMODATION

Youth Hostels in Lisbon:

<http://www.hostelbookers.com/hostels/portugal/lisbon/>

Some examples:

Lisbon Youth Hostel (Central Lisbon)



<http://www.hostelworld.com/hosteldetails.php/Lisbon-Youth-Hostel/Lisbon/23734?dateFrom=15+Jul+2013&dateTo=26+Jul+2013>

Price per person per night: € 22

Lisbon Lounge Hostel (downtown)

<http://www.lisbonloungehostel.com/entry.html>

Price per person per night: € 14 to € 32



Equity Point Hostel (downtown)



<http://www.hostelbookers.com/property/prp/58633/arr/2013-07-15/ngt/11/pp/1/>

Price per person per night: from € 20 to € 24 (shared room and bathroom)

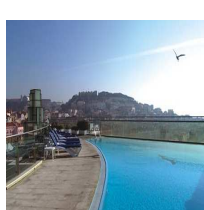
Lisbon Calling Hostel (downtown)



<http://www.hostelbookers.com/property/prp/39875/arr/2013-05-10/ngt/2/pp/1/>

Price per person per night (sharing): around € 17

Aparthotel Eden Vip Executive (4 stars - apartments)



<http://www.hostelbookers.com/property/prp/6131/arr/2013-07-15/ngt/11/pp/1/>

Law Schools Global League Summer School 2013 @



Price per person per night (4 sharing): around € 37

Holiday Inn Lisbon – Continental (3 stars)



<http://www.ihg.com/holidayinn/hotels/us/en/lisbon/lisbn/hoteldetail>

Price per person per night: from € 57

Other sites where you may find accommodation:

VISIT LISBON - <http://www.visitlisboa.com/Conteudos/Menu-Principal/Home.aspx?lang=en-GB>

LONELY PLANET- <http://www.lonelyplanet.com/portugal/lisbon>

GO LISBON - www.golisbon.com/

BOOKING - <http://www.booking.com/>

ECONOMIC ACCOMODATION –

<http://www.lisbon30.com/hotels>

<http://erasmusu.com/en/erasmus-lisbon/student-housing>

Please address your questions to:

|+351 217 214 179 | fbc@fd.lisboa.ucp.pt