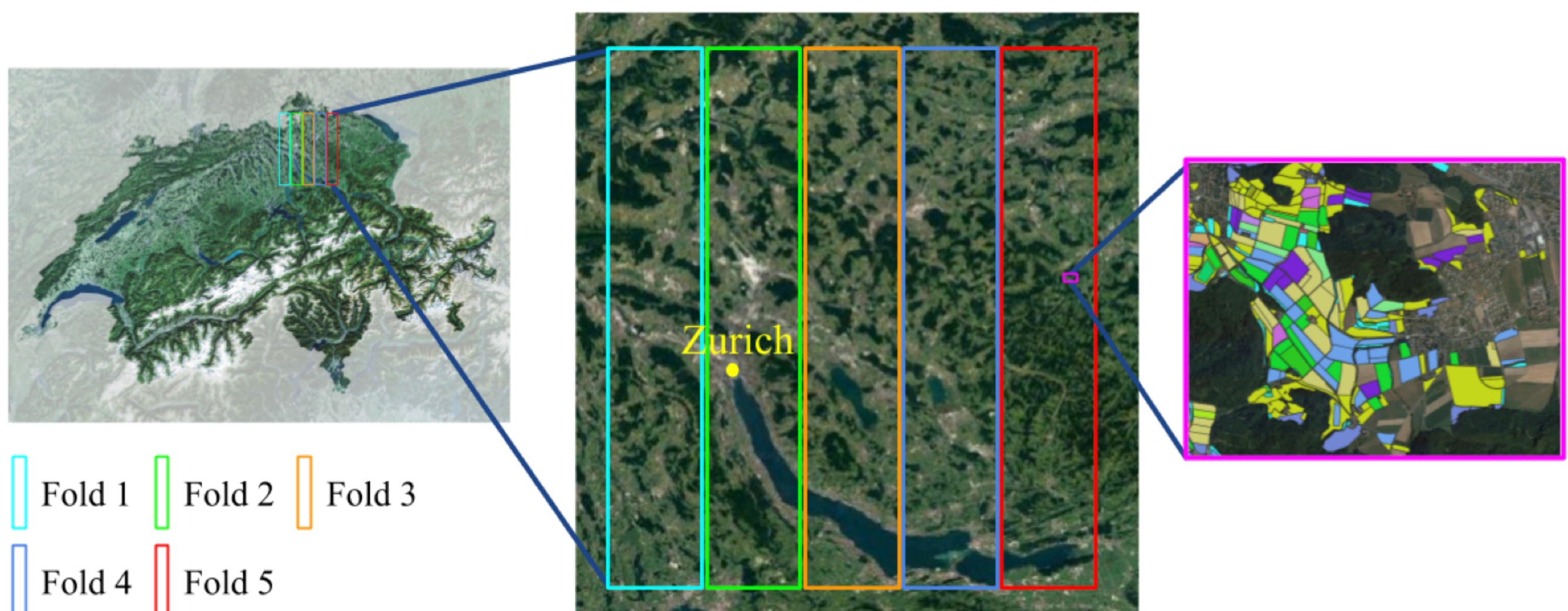


Computer Vision and Machine Learning for Environmental Monitoring

Speaker: Konrad Schindler
ETH Zurich



Source: <https://arxiv.org/abs/2102.08820>

Abstract

I will give an overview of our work that uses machine learning to map and monitor environmental variables (like canopy height, ice cover etc.) from satellite and ground-based images, and discuss engineering challenges that arise in environmental applications.



[Registration link](#)