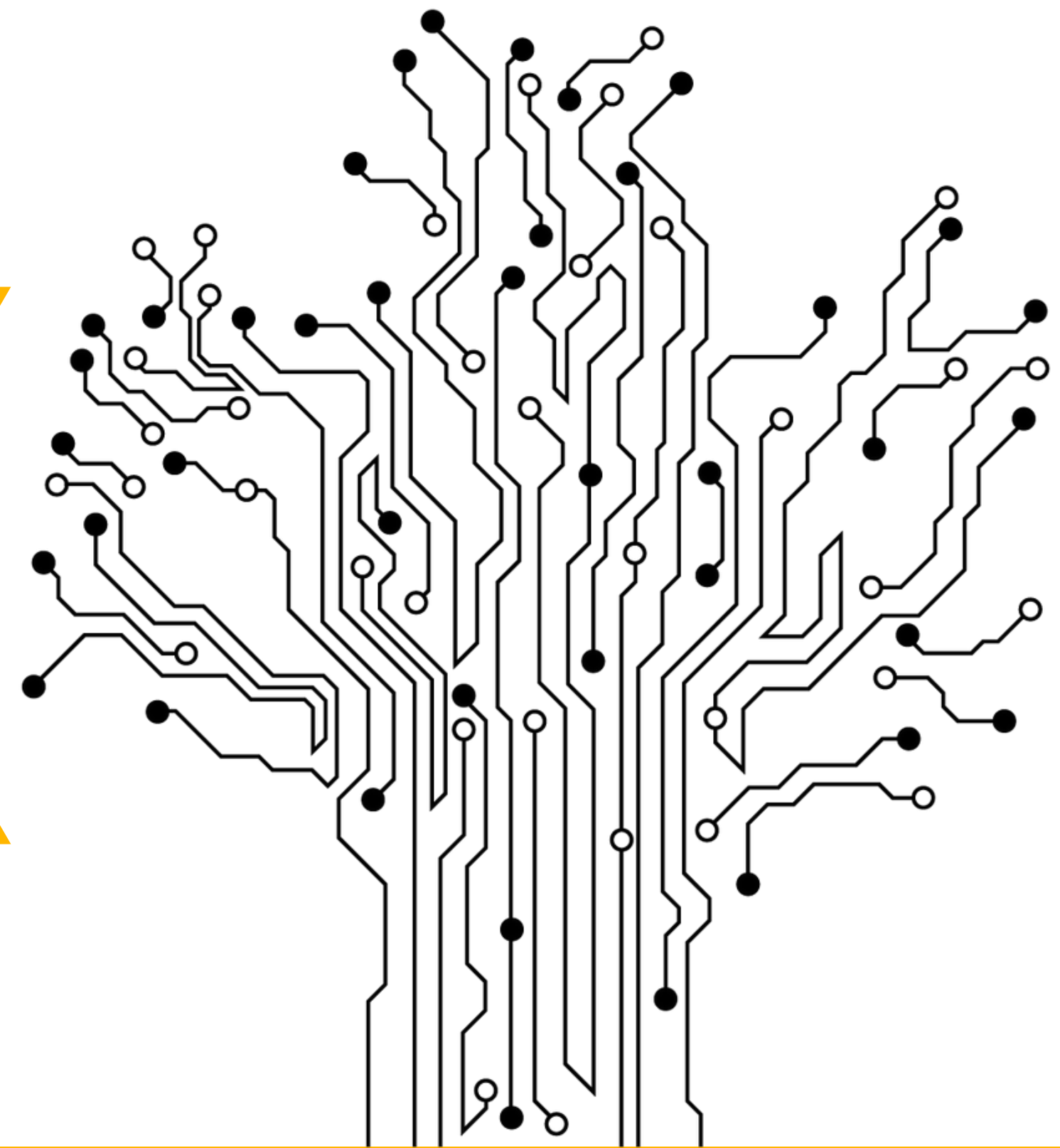
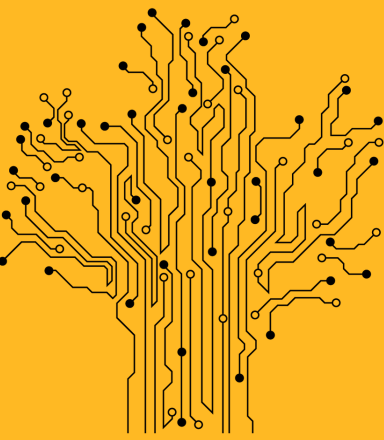


Data Science





At the meeting you will learn about

corporate services

the study process features

IC and SCE

schedule and session

HSE Corporate Services

- Student E-mail
- LMS (Learning Management System)
- RUZ (electronic schedule)

1. Student E-mail

Address: _____@edu.hse.ru

Password will be generated automatically by a set of random gits. Information about the generated login and password will be sent to the student's personal e-mail.

Access to the corporate account is opened 2 hours after receiving the letter, and integration into all corporate systems is done during night.

2. LMS (Learning Management System)

Online learning system of HSE National Research University.

Log-in: username and password are fully in line with your email

Access via <http://lms.hse.ru/>

3. RUZ (electronic schedule)

HSE online-system with the schedule of training sessions is called RUZ. An individual schedule is also available:

- on RUZ website <https://ruz.hse.ru>
- on the educational program page
- in the Mobile App "RUZ HSE"

Features of the Study Process at the HSE

Modules

academic year = 4 modules of 8-12 weeks of classes

Sessions

each module ends with an exam week (or two) during which the exams take place; students might have 7 exams in 7 days, but no more than one per day

Exams

exams are the prevailing form of control; there are disciplines without exams (*the final result is awarded based on the accumulated grade*)

Retakes

twice a year: according to the results of 1-2 modules (till February 15) and according to the results of 3-4 modules (till October 15); three attempts to pass a discipline: examination, retake, commission

10-point scale

all grades are given on a 10-point Scale, correspondence has been established for the 5-point Scale officially adopted in Russia, as well as for the European scale of higher education grades

Rating

all academic achievements of students are compared using current and cumulative rankings

Study Process Schedule,

	Study period	Session	Holidays
1 module	01.09.2021-17.10.2021	18.10.2021-24.10.2021	
2 module	25.10.2021-19.12.2021	20.12.2021-30.12.2021	01.01.2022-09.01.2022
3 module	10.01.2022-27.03.2022	28.03.2022-03.04.2022	
4 module	04.04.2022-19.06.2022	20.06.2022-30.06.2022	03.05.2022-08.05.2022 01.07.2022-31.08.2022*
			<i>*For graduate students</i> 01.07.2022-12.08.2022

Individual Curriculum

Elective part of the program

- ***Bridging Courses***
- ***Electives from study plan*** should be chosen for the whole year
- ***FCS Electives, Open Educational Courses***: deadlines are tracked through e-mails from Study office and announcements in the LMS
- Open Educational Courses catalog

MAGOLEGO

- Obligatory part of the educational program
- All courses are in 3-4 modules, on Fridays
- The number of students per course is limited
- Catalogue of courses for 2021/2022

Session

General periods – Modules 2 and 4

Secondary periods – Modules 1 and 3 (*exams are less frequent, depending on Individual Curriculum*)

According to the results of Modules 1-2 or 3-4, a student may have no more than 2 debts.

Liquidation of 2 and less debts is carried out twice a year:

1. from January, 11 to February, 15 (the first semester)
2. from September, 01 to October, 15 (the second semester)

The student can have 1 standard retake and 1 retake with the commission.

**in the case you've skipped the exam for a documented, valid reason you can have 2 standard reissues and 1 reissue with a commission*

If after all the retakes the student still has debts for one or two courses or did not choose the topic of the Coursework, the student is offered a special Individual Curriculum for retakes (paid tuition); for commercial students – additional payment for a specific course.

If the student refuses the Individual Curriculum with repeat study, he or she will be expelled after the end of the retake period.

Practical Training

Practical training of students is a form of performance by students of certain types of work related to future professional activities and aimed at the formation, consolidation, development of practical skills and competencies in the profile of the corresponding educational program.

1 Scientific and Research Internship

- participation in a project seminar for the 1st year;
- participation in research seminars for 1st and 2nd year students;
- passing scientific(research) Internship in the summer-autumn period between the first and second year of study;

2 Course Work (project) and Master's Thesis

Choice of topic and supervisor

- Choosing a topic and supervisor via LMS or/and google-form until November 15
- Only an employee of the National Research University Higher School of Economics can be a supervisor of the coursework

Submission of coursework

- Uploading of the work and supervisor's review in the LMS + uploading of "Anti-plagiarism" report to google-drive

Change of theme is from April 01 to May 01.

Proposed topics, deadlines, templates, links to google-forms, etc. are posted on the program website in the "Practical Training" section.

3 Projects and Research

Students' Courses Evaluation (SCE)

The SCE is designed to improve the quality of planning and organization of the educational process. The results of the assessment are taken into account by the academic supervisor of the program, the manager, and the faculty administration when addressing personnel issues and when adjusting curricula.

1 The Students' Courses Evaluation Questionnaire is opened in each module (in 1 and 3 if there are exams) 2 weeks before the beginning of the session and is placed in a personal office at LMS.

2 If a student doesn't pass the SCE, he or she will be subject to disciplinary action, which may lead to expulsion.

NB: if a student doesn't pass the SCE, he or she will be subject to disciplinary action, which may lead to expulsion.

Reasons for Expelling from the HSE

Failure to comply with the obligations to master the educational program and the curriculum in good faith: academic failure/ failure to pass the state final examination)

Infringement of the Internal Regulations of the university

Failure to comply with the conditions of the agreement on provision of paid educational services

First-year students have to:

- Choose the head of the group
- Create a group mail and give the address to the Study office
- Set up forwarding from corporate email

All important letters, announcements, notices, alerts will be sent exclusively to the student mail.





Additional information

Service on students' Covid-19 status monitoring

- ✓ The HSE App X mobile app is available for HSE students to record information about their Covid status. First-year students will be able to use the app after receiving their corporate address.
- ✓ For convenience, use the instructions on how to fill out the form on your statuses.
- ✓ Electronic passes for students who are on lockdown (for a period of lockdown) or are sick with Covid-19 (until fully recovered) will be blocked.

Documents submission

- ✓ By November 1, 2021, the original document of previous education must be submitted to the Study Office.
- ✓ Together with the original document of previous education you should bring the completed and signed documents: Consent to Personal Data Processing + appendix, the sheet of familiarization with Local normative acts of HSE (all files will be sent by mail).

Master's Programme

Data Science

In order to analyze the growing volume of data generated in all areas of today's society, the modern IT industry is elevating the issue of Big Data. Likewise, the academic community is establishing the emerging field of Data Science. This programme includes training in the fields of computational models, mathematical modelling and forecasting, computer architecture, advanced programming techniques, as well as data storage and retrieval. On the strength of its multidisciplinary design, this programme may serve as a backbone that is of interest to graduates of numerous faculties, as well as to staff members at research centres. Graduates of the programme will be able to solve problems concerning data search, collection, storage, preparation and analysis, as well as interpretation of results in the area of specialization.



About

For Prospective Students

For Students

2 years

Full-time Programme

195

390

Tuition F

HSE Sch

Applicant

Important announcements

2021-08-25

[Online-meeting for the 1st year st](#)

News



[Notice Board](#)

[For Admitted Students](#)

[Academic Mobility](#)

[Practical Training](#)

[References](#)

[Final Assessment](#)

[International Students Support](#)

[Recommended MOOCs](#)

[Programme Structure and Extra Options](#)

[Student Theses Catalogue](#)

[Career Development Centre](#)

[Double Degree Programme with University of](#)

[Clermont Auvergne](#)

[Scholarships](#)



State Accreditation

Ask a question

Apply Now (for International Applicants)

International Admissions

[Courses](#)

[Faculty](#)

[Timetable](#)

[Degree Programme Documents](#)



Academic Supervisor
[Kuznetsov, Sergei](#)

Contacts

Study office

Address: Pokrovsky Blvd, 11, room S807

Work schedule: Monday-Friday, 10:00 to 18:00

Please, arrange person-to-person meetings via Study office's staff e-mails in advance.

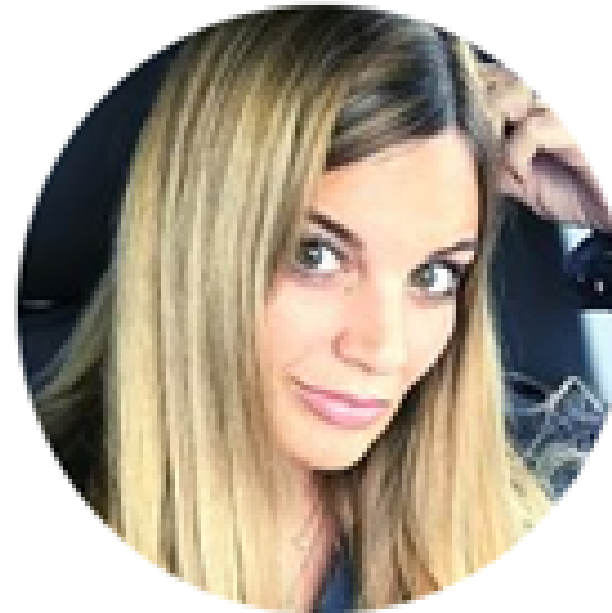
You are always welcome to contact the Study office staff with questions regarding the educational process.



Academic Supervisor

Kuznetsov Sergei Olegovich

skuznetsov@hse.ru



Manager

Pluzhnikova Irina

ipluzhnikova@hse.ru

+7(495)772-95-90*27330



Methodist

Petrova Anastasia

aa.petrova@hse.ru

+7(495)772-95-90*27329

Thank you for
your attention!

