

International Master in
**COMPARATIVE
SOCIAL
RESEARCH**

qualitative
analysis

culture

social problems

societies

quantitative
analysis

nations

social groups

<https://www.hse.ru/en/ma/csr>



SPEAKER



EKATERINA (SERGEYEVNA) MITROFANOVA

- PhD in Sociology/Demography (HSE)
- Academic Supervisor of CSR Master's Programme
- Head of Laboratory of Social and Demographic Policies
- Assistant Professor at the Department of Demography
- Head of the student society "Demographer"
- 15 years in HSE
- emitrofanova@hse.ru
- tg: @ekaterimi



HSE's profile

A TIP FOR YOU

In the Russian version of my page, go to the end of this page
<https://www.hse.ru/staff/emitrofanova#teaching>

For the reference list

Data and articles for essay

To build a strategy in master's



В помощь студентам

Организация научного текста

Список литературы - [в один клик](#):  [Инструкция по установке Zotero](#)

Научная литература:

- [Академия Гугл](#)
- [Электронные ресурсы Вышки](#)
- [Научные журналы Вышки](#)
- [Демоскоп Weekly](#)
- [Демографическое обозрение](#)

Научные данные:

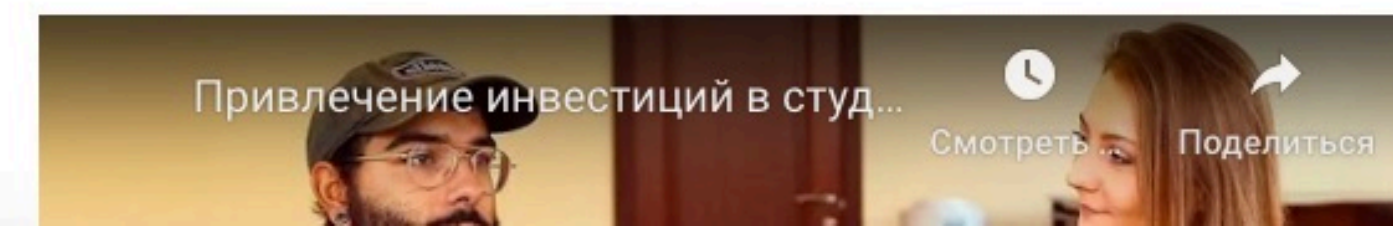
- [Приложения Демоскопа](#)
- [Единый архив экономических и социологических данных](#)
- [Ресурсы Всемирного банка, OECD, МВФ и т.д.](#)
- [Generations and Gender Programme](#)
- [European Social Survey](#)
- [World Value Survey](#)
- [Российский мониторинг экономического положения и здоровья населения](#)
- [Человек, семья, общество 2013 и 2017](#)

Возможности во время учебы

- [Ежемесячная подборка конференций, школ, стипендий](#)
- [Всё о способах конвертации академических успехов в карьерные](#)

 [Возможности в Вышке 2022](#) (PDF, 1,55 Мб)

Пример такой конвертации:



MASTER'S PROGRAMME COMPARATIVE SOCIAL RESEARCH



- Since 2016
- Founded by Inglehart's Laboratory
- Studying process is fully in English
- Our alumni work in top companies in the field
- They successfully enter leading Russian and international PhD Programmes
- Intense social life



Investigating differences between nations, cultures and other social, political, religious and ethnical groups

STUDENTS' TOPICS

TP: International comparison of gender differences on the labour market

MT: Carrier paths of woman in science: comparative analysis of Germany & Russia



STUDENTS' TOPICS

TP: Attitudes towards research ethics among university students: interregional comparison

MT: Comparative analysis of ethical research behaviour among English & Russian students



STUDENTS' TOPICS

TP: Everyday typifications of ethnic groups: inter-ethnic comparison

MT: Development of religious identity among migrants in *Moscow* and *Saint Petersburg*



PROGRAMME'S HIGHLIGHTS

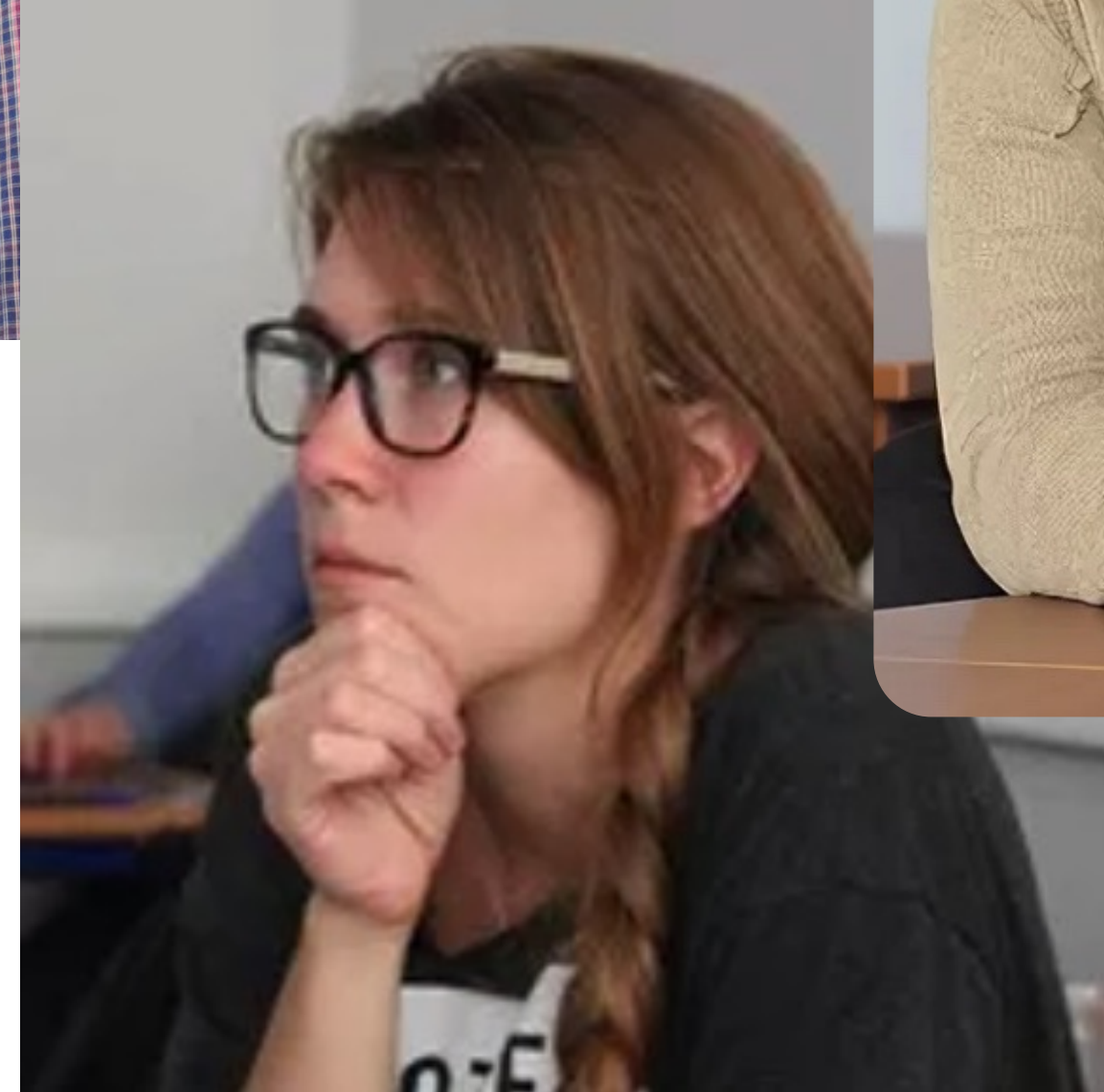
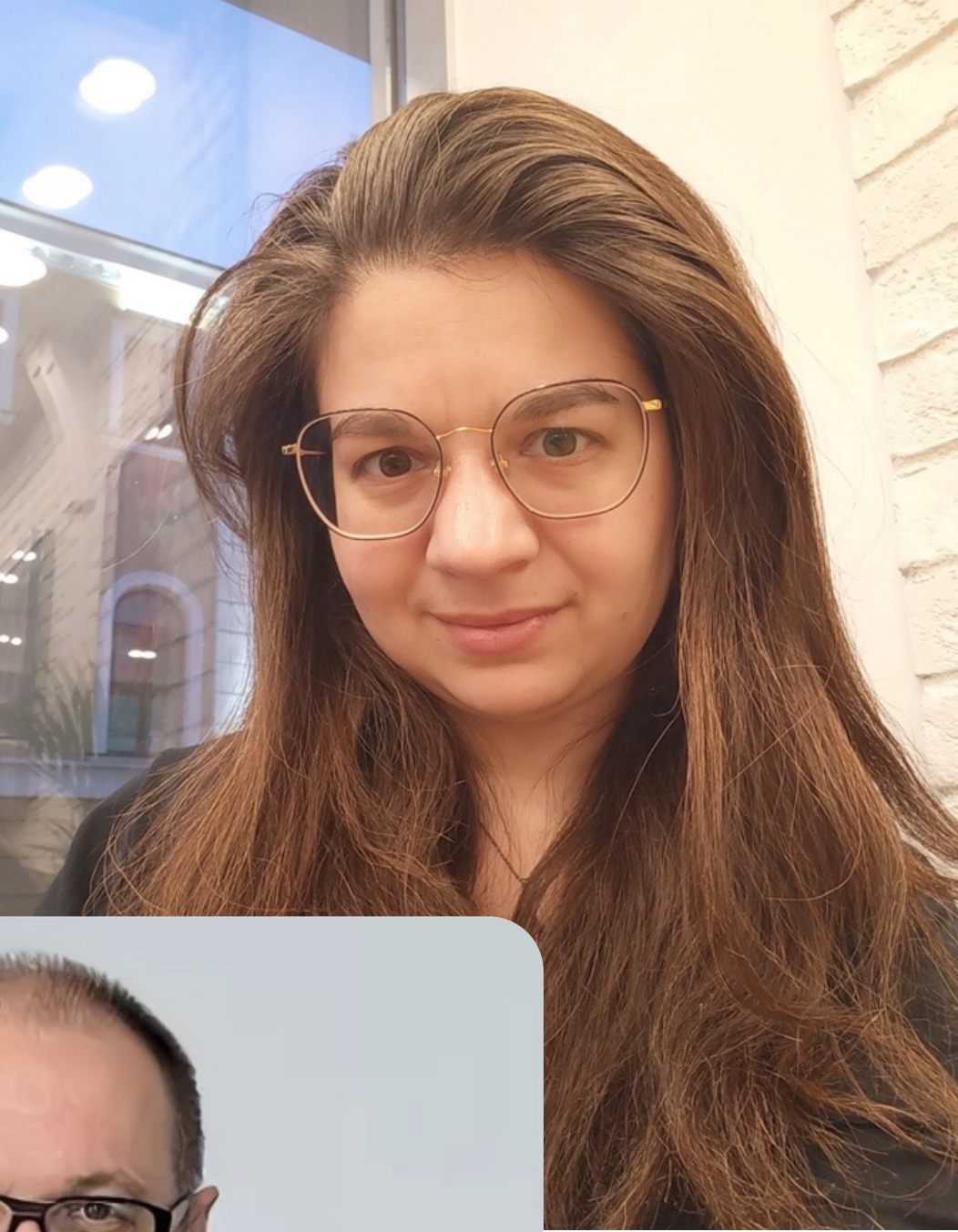
- 2-year “Master in Sociology” programme
- For Russian students: 15 state budget places and 5 fee-based places
- For foreign students: 10 scholarship places and 5 fee-based places
- Russian and international Accreditation
- Research internship in Russia or abroad
- Involvement into international research
- International teaching staff
- Guest lectures and workshops



HSE:

- №1 among best universities in Russia (Forbes 2020–2022)
- №1 among best universities in Russia (HeadHunter 2023)

INTERNATIONAL POOL OF LECTURERS



PROGRAMME STRUCTURE

1st year

2nd year

Modules I - II

Basic social theory
and methods

Research projects
and advanced methods

Modules III - IV

Advanced methods
and thematic focus
Term paper

Master's thesis

Continuously

Guest lectures & workshops by invited international scholars

INDIVIDUAL TRACKS FOR STUDENTS

MORE ACADEMIC

MORE PRACTICAL

OFFLINE / ONLINE

DISSERTATION / PAPER

MASTER'S-PHD TRACK

**INTERNSHIP AT ANOTHER
UNIVERSITY**

**STIPENDS,
ACADEMIC PROJECTS**

INTERNSHIP AT WORK

**GRANTS,
PRACTICAL PROJECTS**

STIPENDS

State Academic
Scholarship

**1 894 rub/month
automatic**

Increased State
Academic Scholarship

**5 000-20 000 rub/month
application in LMS**

Partner and Fund
Scholarships

Scholarship of the Lukoil Fund
Vladimir Potanin Fund
Scholarship Programme

**2 500 - 50 000 rub/month
application at website**

Financial aid

**Russians:
1 200 - 10 000 rub/month
application at office**

Foreign students

Scholarships for
Outstanding Academic
Achievements

Scholarships named after
famous and outstanding
scholars
Silver Nestling

**10 000 - 20 000 rub/month
Faculty applies documents**

Endowment Fund
Scholarship

**50 000 rub/month
application at website**

MASTER'S-PHD TRACK

- Special HSE's support programme for students aimed to build an academic track
- **Deadline:** in the **middle of September**
- **Stipend:**
 - 50 000 rub/month in Master's
 - 70 000 rub/month in PhD
- **Returning of stipend:** only in PhD programme if you did not defend your thesis by the end of the third (the final) year
- **Obligation:** to publish one or two papers in peer-reviewed journals
- **More info** in Russian:
<https://aspirantura.hse.ru/mastersphd2023>

PROGRAMME CURRICULUM 2024/25



METHODS

"R" & Statistics
Qualitative Data Collection
Big-Data
Multi-level Regressions
Methods in Comparative
and Historical Sociology

Measurement Theory and
Questionnaire Design

Time in Social Sciences



THEORY

Approaches to Comparative
Social Research
National Identity and
Belonging



RESEARCH PREPARATION

Research Projects
Research Seminars:

- Craft of Comparisons
- Skills and Principles of Academic and Research Profession
- Academic Style in Science and Research

RESEARCH PROJECTS

- Length is 3 months
- Real research
- One or several different projects
- In HSE or outside
- Anywhere in Russia
- Anywhere abroad





NATIONAL RESEARCH UNIVERSITY

WHAT OUR GRADUATES DO?

Academia in Russia

Laboratories
Institutes
Research Centers
Graduate Schools

Russian job market

Market Research
Foundations
Consulting
Think Tanks

KANTAR TNS



UNIVERSITÄT BERN



UPPSALA UNIVERSITET

Academia abroad

Graduate Schools

International job market

NonGov Organizations



University of Manitoba



STUDENT'S ACADEMIC LIFE



**ТИМУР
СЛАВГОРОДСКИЙ-КАЗАНЕЦ**

Исследования видеоигр:
как сюжет воздействует на
политические взгляды человека
в виртуальном мире?

**15 НОЯБРЯ
19:00**



ACADEMIC MOBILITY



London became my friend - about mobility program at King's College London (KCL)

Alina Golubeva, 2nd year student of the Bachelor's program "Marketing and Market Analytics" - about her participation in the mobility program at King's College London (KCL)

Education ideas & experience students
Reporting an event international cooperation
bachelor's programmes King's College London (KCL)

September 01



My Spring Semester in Sorbonne

Alice Fanyan, a third year student of the World Economy program at the Faculty of World Economy and International Affairs, shared her experience of studying at Université Paris 1 Panthéon-Sorbonne and living in the French capital.

ideas & experience students Reporting an event
international cooperation bachelor's programmes
University Paris 1, Pantheon-Sorbonne

August 30

Exchange semester at the University of Bologna

Anna Rusinova, a 2nd-year student of the Master program "Cognitive Sciences and Technologies: From Neuron to Cognition" and a participant of the exchange program with the support of the Endowment Fund scholarship, spoke about her experience of studying and living at the University of Bologna.

ideas & experience students Reporting an event
international cooperation master's programmes
University of Bologna

August 28



Emotions received during my exchange semester at the University of Oslo will never be forgotten

Elina Sigdel, a 2nd-year student of the master program "Computer Linguistics" and a participant of the exchange program with the support of the Endowment Fund scholarship, spoke about her experience of studying at the University of Oslo and living in Norway.

Education ideas & experience students
Reporting an event international cooperation
master's programmes University of Oslo

August 29

Application Call for Study Abroad Programmes Is Open

From August 22 to September 21 you can apply for exchange programmes in Spring Semester 2023 under university-wide agreements

August 22



"When the dream about Venice came true" - about exchange studies in Ca' Foscari University of Venice

HSE's
partners

- [Student Exchange Opportunities](#)
- [Summer & winter schools](#)
- [Travel Grants of our Faculty](#)

[Armenia](#)

[Brazil](#)

[China](#)

[Croatia](#)

[Germany](#)

[Hungary](#)

[Indonesia](#)

[Israel](#)

[Italy](#)

[Japan](#)

[Kazakhstan](#)

[Kyrgyzstan](#)

[Mexico](#)

[Morocco](#)

[South Korea](#)

[Thailand](#)

[Vietnam](#)

CSR SOCIAL LIFE



STUDENT'S ACTIVITIES



[Students' handbook](#)
[For First-Year Students](#)
[Support of international students](#)

Students' expeditions [Opening Russia](#)
[Student Initiative Support Centre](#)
[Студсовет](#)

WHO ARE OUR GRADUATES?



Kirills Makarovs
Research internship
at Tilburg University,
PhD student
at University of
Essex, UK



Miguel Ángel Sevilla
Mayol
Economic Commission for
Latin America and the
Caribbean,
The United Nations
Organization



Saule Bekova
Research Fellow at
HSE Institute for
Education



Evgenia Mitrokhina
Research Assistant
at Laboratory of
Comparative Social
Research

PORTFOLIO APPLICATION

<https://www.hse.ru/ma/csr/tracks>



PORTFOLIO APPLICATION

Criteria	Maximum points
Diploma of BA or equivalent/ official transcript	10
Curriculum vitae	10
Statement of research interests and methods knowledge	40
Letter of motivation	10
Two letters of recommendation	10
Publications, certificates, participation in conferences, olympiads, etc.	10
Certificates/other certificates confirming knowledge of a foreign language	10
Total	100

ENGLISH PROFICIENCY

- Applicants who gained 30 points inclusive or more for the above portfolio elements will be invited to an online interview.
- The interview will not be evaluated, but it serves as a way of confirming the interests, skills, achievements and the level of proficiency in English.

Check your English: if you understand more than 70% of material, your listening skills are enough for studying in English

<https://youtu.be/F8pHclxqmxU>



STATEMENT OF RESEARCH INTERESTS AND METHODS KNOWLEDGE (ENG)

Essay – comparative angle! (600-1000 words):

- **Introduction:** research statement, research questions/hypotheses, relevance and novelty of the study
- **Theoretical part:** overview of theoretical approaches, explanation of terms, conceptualization of concepts
- **Empirical/creative part:** rationale for choosing an approach; methodological innovations; description of study stages; discussion of results
- **Conclusion:** summary of the study
- **References** (APA)

OTHER OPPORTUNITIES FOR ENROLLMENT (RUSSIAN STUDENTS)

- Дни открытых дверей <https://social.hse.ru/polls/557748927.html>
- Зимние школы https://www.hse.ru/winter/2023_soc/
- Ранние приглашения <https://ma.hse.ru/earlyinvitation>
- Олимпиада «Высшая лига» <https://olymp.hse.ru/ma/>
- Олимпиада «Я профессионал» <https://yandex.ru/profi/>
- Конкурс «Твой проект» <https://www.hse.ru/tvouproekt/>
- Студенческое общество «Демограф» (выступление и сертификат усилят портфолио) https://www.hse.ru/demo/sdp/stud_demograf/

FAST TRACKS/ ADDITIONAL POINTS

Olympiad "Higher League"

- Winners with diplomas of all levels and medals in sociological directions, as well as in the field of "Mathematical methods in Sociology" – 100 points for portfolio
- Read more: <https://ma.hse.ru/profes>
- Participation in the "Higher League" in any sociological direction and in the direction of "Mathematical methods in Sociology" without victory – 10 points

Olympiad "I am a professional"

- Winners in sociological directions – 100 points for portfolio
- Winners in sociological directions without victory – 10 points

Competition "Your Project"

- Winners in CSR direction (1st-3rd place) – 100 points for portfolio
- Winners without a place in CSR and other sociological directions – 15 points
- CSR and other sociological directions without victory – 10 points

NIRS competition

- Winners in sociological directions (1st-3rd place) – 100 points for portfolio
- Winners in other directions (1st-3rd place) – increasing coefficient x2 for essay, motivational letter and CV
- Laureates in any direction – 15 points
- Participation without victory – 10 points

Early Invitation Competition

- Invitation from CSR – 100 points
- Participation without invitation from CSR – 10 points

Winter School of the Faculty of Social Sciences

- Victory in competitions in CSR direction – 15 points
- Participation in the school – 10 points

Open Doors Days

- Participation in one Open Doors Day of CSR - 5 points

OUR CONTACTS

Program website:

<https://www.hse.ru/en/ma/csr>

Academic Supervisor:

Ekaterina Mitrofanova

emitrofanova@hse.ru

tg: @ekaterimi

Manager:

Ekaterina Smyslenova

esmyslenova@hse.ru

BONUS TRACK

ПОДГОТОВКА ПОРТФОЛИО: 5 СОВЕТОВ



5 СОВЕТОВ ПРИ ПОДГОТОВКЕ ПОРТФОЛИО



**ЕКАТЕРИНА
МИТРОФАНОВА**

*Академический руководитель
магистерской программы
«Сравнительные социальные
исследования»*

ПОДГОТОВКА ПОРТФОЛИО: 5 СОВЕТОВ

РЕЗЮМЕ

сфокусированная самопрезентация

Разбивайте резюме на блоки, будьте краткими, структурными, грамотными. Лаконичное и структурированное резюме позволяет за минуту увидеть вашу карьерную траекторию – лучший способ рассказать о себе через достижения и опыт работы

МОТИВАЦИОННОЕ ПИСЬМО

зарождение интереса

Больше времени уделите подготовке мотивационного письма. Оно должно быть структурировано и не превышать рекомендуемый объем. Помимо стандартных пунктов важно обозначить, почему выбранная магистерская программа – лучшая точка старта или продолжения карьерного и личного развития

ПОДГОТОВКА ПОРТФОЛИО: 5 СОВЕТОВ

РЕКОМЕНДАТЕЛЬНЫЕ ПИСЬМА

взгляд



со стороны



Рекомендации – слово, которое звучит солидно и пугает значимостью. На самом деле это максимально просто и логично: рекомендации от людей, с которыми вы взаимодействовали ранее, помогают сделать образ живым и объемным

Хорошая рекомендация включает справку о том, кому она дается, какие остались впечатления о совместной работе и как вы сможете реализоваться на выбранной программе с точки зрения рекомендателя

СОБЕСЕДОВАНИЕ

сила



личного знакомства



При личной встрече используйте мотивационное письмо как опору, добавив фактурных деталей (хобби, поездки, увлечения). Вам будут задавать вопросы относительно предполагаемой темы исследования, поэтому важно подготовить одну или несколько тем, ознакомиться с литературой. Воспринимайте собеседование как карьерную консультацию, где лучшие профессора помогают выбрать образовательный трек